

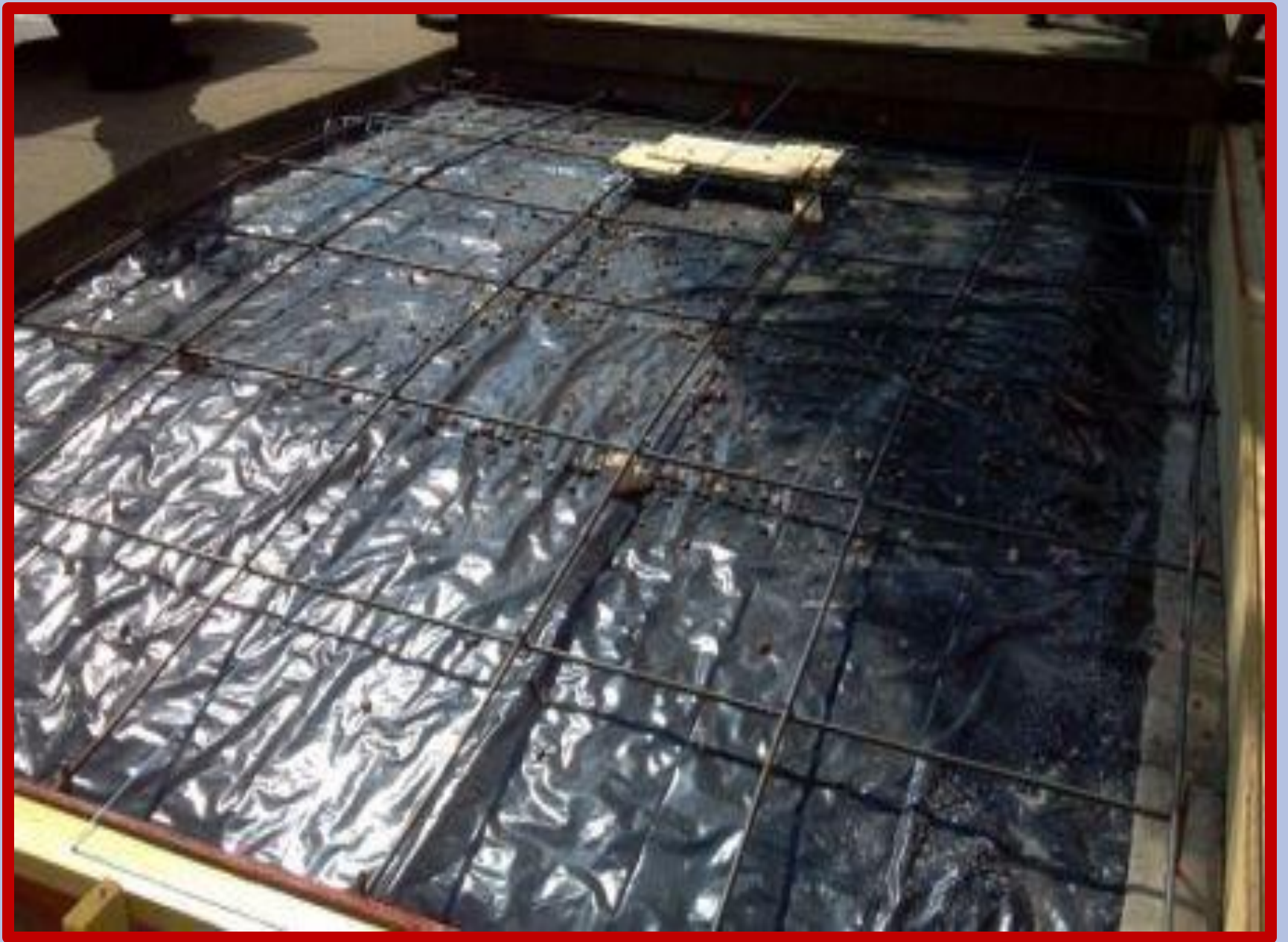
Making of Our Memorial  
Dedicated to the Emergency  
Responders Who Perished on  
September 11, 2001.



Getting site ready for construction.











52 Error (ft) 5/5 Fix/Sats

000 R01 46/51/-4° 0.00

Speed (mph) Altitude (-88ft) Last fix  
0.0 854 15:34:25

Latitude Longitude  
36°59'39.0"N 85°54'42.2"W

Batt. (93°F 3.83V) DOP/HDOP/VDOP Brightness (Lux)  
70% 2.3/1.2/2.0 14764



Get Our Free Travel Organizer App.  
Access Trip Details on the Go.





8-16-2012

EMERGENCY SERVICES TIME CAPSULE

(Do Not Cut)

# Contents of Time Capsule

09-11-2012

- GFD 125 year celebration patch
- GFD Granny truck patch
- GFD 2012 calendar of firefighters
- Newspaper article on new Fire Chief Tony Atwood
- Magazine article on new reflective system being installed on the fire trucks
- City Pin with bagpiper on it
- Key to the City
- City Budget of 2012-2013
- GPD Patch
- GPD Pin
- GPD calendar
- Memo announcing the consolidation of 911
- 911 Key chains
- Barren/Metcalfe EMS patches













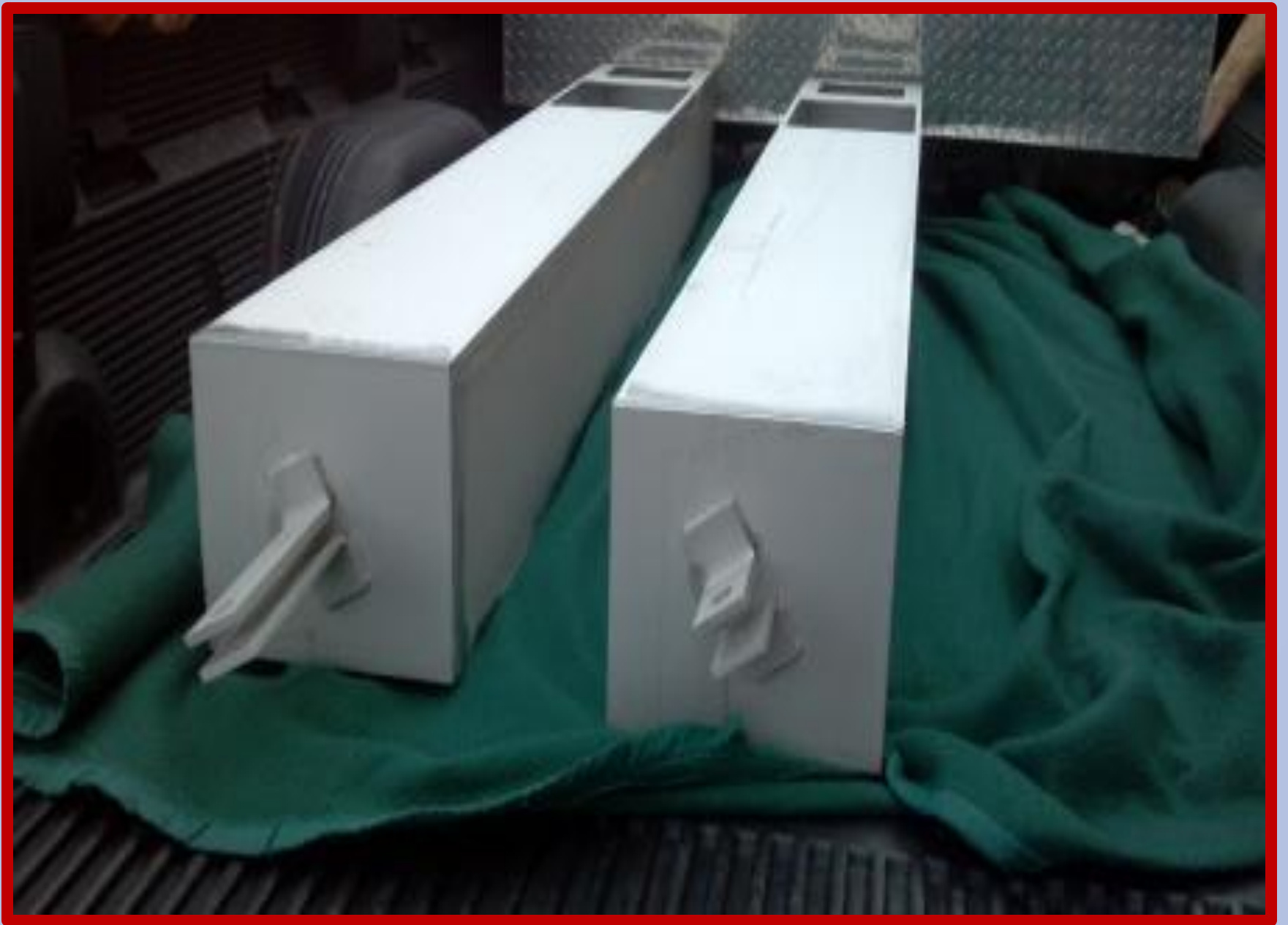




























DEDICATED TO THE MEMORY OF  
RESPONDERS WHO PERISHED AT WENCHO TRADE CENTER  
ALL MEMORIALS IN POLICE OPERATIONS



IN MEMORY OF THE HEROES  
AND VICTIMS OF THE WORLD TRADE CENTER  
AND PENNSYLVANIA POWER PLANT ON 9/11

SEPTEMBER 11, 2001

EMERGENCY  
RESPONDERS  
MEMORIAL

Thank You To  
Everyone Who  
Helped Bring This  
Memorial To Reality.